

\$349,900 - 835 Mt Sundance Manor W, Lethbridge

MLS® #A2201531

\$349,900

3 Bedroom, 3.00 Bathroom, 1,472 sqft
Residential on 0.03 Acres

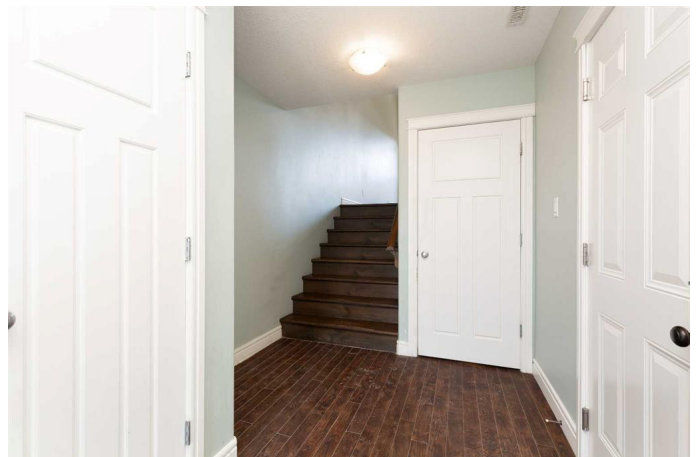
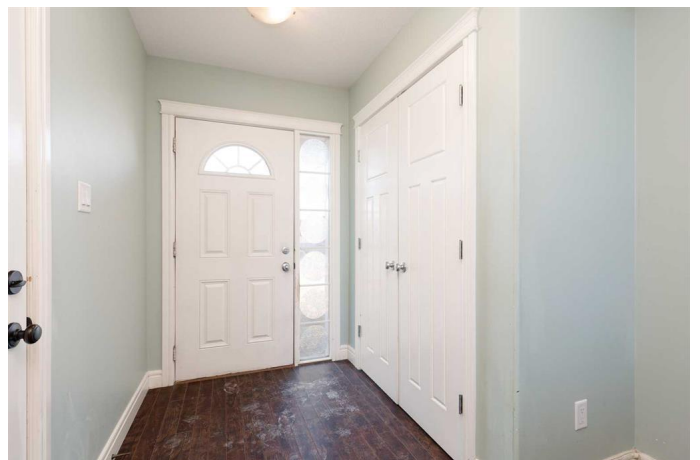
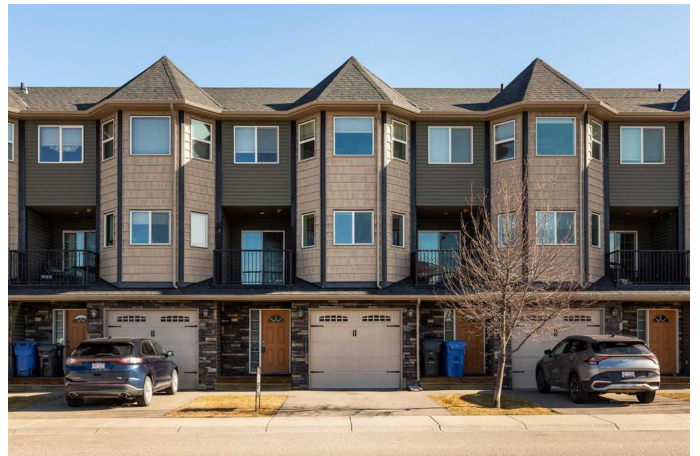
Sunridge, Lethbridge, Alberta

Located in Sunridge, Lethbridge, this condo provides comfortable living with excellent amenities. Enter through a welcoming entryway that leads to the attached garage. The spacious living room features 12' ceilings and a cozy fireplace. The kitchen is filled with natural light and includes stainless steel appliances, solid-surface countertops, and an open-concept layout ideal for entertaining. The primary suite is located upstairs and includes a 3-piece en-suite and a walk-in closet. There are two additional bedrooms, a 4-piece bathroom, and a laundry room. The lower level offers a versatile flex space that can serve as an extra bedroom or family room, complete with a full bathroom and a separate entrance. This property is conveniently situated near local amenities, parks, walking paths, and the University of Lethbridge, making it a great choice for students, investors, or first-time buyers.

Built in 2010

Essential Information

| | |
|----------------|-----------|
| MLS® # | A2201531 |
| Price | \$349,900 |
| Bedrooms | 3 |
| Bathrooms | 3.00 |
| Full Baths | 3 |
| Square Footage | 1,472 |
| Acres | 0.03 |



| | |
|------------|---------------|
| Year Built | 2010 |
| Type | Residential |
| Sub-Type | Row/Townhouse |
| Style | Townhouse |
| Status | Active |

Community Information

| | |
|-------------|-------------------------|
| Address | 835 Mt Sundance Manor W |
| Subdivision | Sunridge |
| City | Lethbridge |
| County | Lethbridge |
| Province | Alberta |
| Postal Code | T1J 4S7 |

Amenities

| | |
|----------------|--|
| Amenities | Snow Removal |
| Parking Spaces | 2 |
| Parking | Driveway, Off Street, Single Garage Attached |
| # of Garages | 1 |

Interior

| | |
|-------------------|---|
| Interior Features | Ceiling Fan(s), High Ceilings, Open Floorplan, Quartz Counters, Vinyl Windows |
| Appliances | Dishwasher, Dryer, Refrigerator, Stove(s), Washer |
| Heating | Fireplace(s), Forced Air, Natural Gas |
| Cooling | None |
| Fireplace | Yes |
| # of Fireplaces | 1 |
| Fireplaces | Gas |
| Has Basement | Yes |
| Basement | Finished, Partial |

Exterior

| | |
|-------------------|---------------------------------|
| Exterior Features | Balcony |
| Lot Description | Landscaped, Lawn |
| Roof | Asphalt Shingle |
| Construction | Mixed, Vinyl Siding, Wood Frame |
| Foundation | Poured Concrete |

Additional Information

Date Listed March 13th, 2025

Days on Market 29

Zoning R-50

Listing Details

Listing Office Lethbridge Real Estate.com

Data is supplied by Pillar 9â,,ç MLSÂ® System. Pillar 9â,,ç is the owner of the copyright in its MLSÂ® System. Data is deemed reliable but is not guaranteed accurate by Pillar 9â,,ç. The trademarks MLSÂ®, Multiple Listing ServiceÂ® and the associated logos are owned by The Canadian Real Estate Association (CREA) and identify the quality of services provided by real estate professionals who are members of CREA. Used under license.