

\$687,000 - 141 Heartland Way, Cochrane

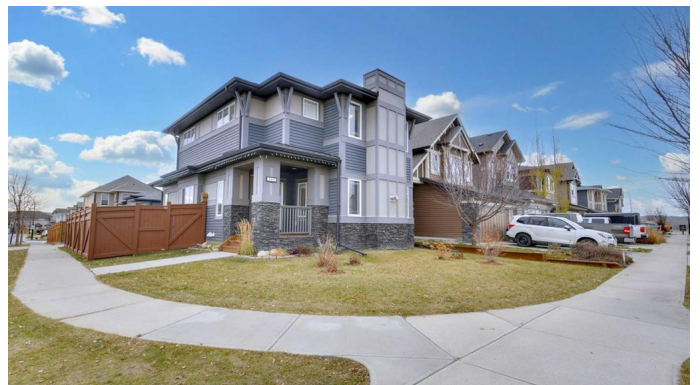
MLS® #A2196415

\$687,000

4 Bedroom, 4.00 Bathroom, 1,670 sqft
Residential on 0.11 Acres

Heartland, Cochrane, Alberta

Discover the quintessential blend of style and comfort in this stunning home located in the highly sought-after community of Heartland. This immaculate 4-bedroom, 3.5-bathroom residence offers over 2300 square feet of developed living space, has been meticulously cared for and is perfectly tailored for entertaining! Upon entering, you'll be greeted by a bright and welcoming living room that seamlessly connects with the open floor plan extending throughout the main floor. This is a dream kitchen features beautiful stone countertops, stainless steel appliances, and a large island – ideal for entertaining family and friends. The expansive primary suite and generously sized secondary bedrooms provide ample space, ensuring comfort for everyone. With clean lines, modern finishes, and thoughtful design elements, this home is truly exceptional, and only a handful of this model available within the community. Heartland is a family-friendly community with numerous amenities, including scenic pathways with access to the Bow River, a future school site with greenspace, and nearby commercial establishments such as Tim Hortons, a daycare, dental clinic, gas station, restaurants, pharmacy, liquor store, optometry clinic, and fitness center. Enjoy the convenience of being just 20 minutes from Calgary, with easy travel facilitated by the new traffic circle. The breathtaking mountain views will inspire you to explore your outdoor pursuits, making Heartland the ideal place to



call home.

This home offers everything you need for a comfortable and convenient lifestyle that offers all types of nearby amenities. Don't miss the opportunity to make this remarkable property yours. Schedule your viewing today and experience the best of Heartland living.

Youâ€™ll love calling this stunning property your home in Heartland, Cochrane!

Built in 2016

Essential Information

MLS® #	A2196415
Price	\$687,000
Bedrooms	4
Bathrooms	4.00
Full Baths	3
Half Baths	1
Square Footage	1,670
Acres	0.11
Year Built	2016
Type	Residential
Sub-Type	Detached
Style	2 Storey
Status	Active

Community Information

Address	141 Heartland Way
Subdivision	Heartland
City	Cochrane
County	Rocky View County
Province	Alberta
Postal Code	T4C0M5

Amenities

Parking Spaces	4
Parking	Double Garage Detached
# of Garages	4

Interior

Interior Features	Built-in Features, Open Floorplan, Pantry, Quartz Counters, Recessed Lighting, Recreation Facilities, Soaking Tub, Storage
Appliances	Dishwasher, Electric Stove, Microwave Hood Fan, Washer/Dryer, Window Coverings
Heating	Forced Air, Natural Gas
Cooling	Central Air
Fireplace	Yes
# of Fireplaces	1
Fireplaces	Gas
Has Basement	Yes
Basement	Finished, Full

Exterior

Exterior Features	Garden, Private Yard
Lot Description	Back Lane, Back Yard, Creek/River/Stream/Pond, City Lot, Corner Lot, Dog Run Fenced In, Garden, Irregular Lot, Private
Roof	Asphalt Shingle
Construction	Stone, Vinyl Siding, Wood Frame
Foundation	Poured Concrete

Additional Information

Date Listed	February 22nd, 2025
Days on Market	17
Zoning	R-LD

Listing Details

Listing Office	RE/MAX Landan Real Estate
----------------	---------------------------

Data is supplied by Pillar 9â„¢ MLSÂ® System. Pillar 9â„¢ is the owner of the copyright in its MLSÂ® System. Data is deemed reliable but is not guaranteed accurate by Pillar 9â„¢. The trademarks MLSÂ®, Multiple Listing ServiceÂ® and the associated logos are owned by The Canadian Real Estate Association (CREA) and identify the quality of services provided by real estate professionals who are members of CREA. Used under license.