

# \$659,000 - 8 Waterford Manor, Chestermere

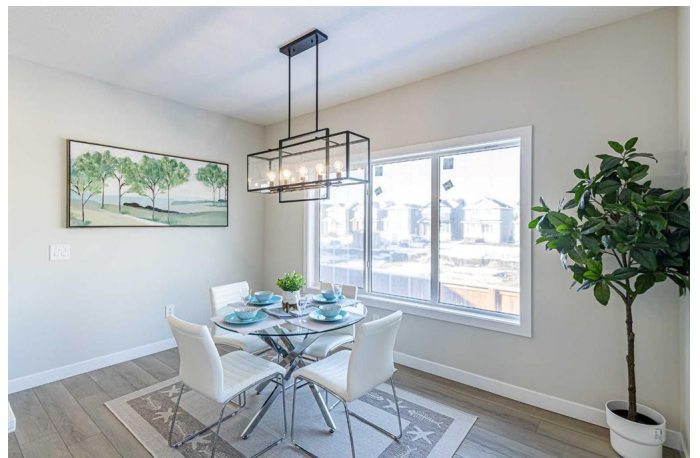
MLS® #A2120442

**\$659,000**

3 Bedroom, 3.00 Bathroom, 1,894 sqft  
Residential on 0.08 Acres

NONE, Chestermere, Alberta

**\*\*\*QUICK POSSESSION\*\*\* FRONT DOUBLE GARAGE** , 3 Bedrooms + Bonus Room + Den | 2.5 Baths | The most popular Moana model, on a 33 feet wide lot, situated in the Waterford Community, minutes from the lake. Experience the epitome of open concept living, featuring upgrades such as 9 ft Ceilings on main floor and basement, metal spindles on railing, 3cm quartz countertops, LVP flooring, under mount sinks convenient upstairs laundry and so much more! Great room includes an electric fireplace which adds style and warmth perfect for chilly nights. The kitchen is completed with a huge island, perfect for gathering families and friends, soft close cabinets and drawers throughout, spacious pantry plus extra counter space, new appliance package including chimney exhaust fan, smooth top electric range, built-in microwave and **UPGRADED** refrigerator and dishwasher. The dining room can host a big family. Upstairs, indulge in the comfort of your perfectly sized central bonus room, ideal for streaming your favourite movies. Retreat to the spacious master suite with an ensuite and walk-in closet for a relaxing escape. The conveniently located laundry room and two secondary bedrooms, both with walk-in-closets, complete the second level. The basement is unfinished but comes with 9 feet ceilings, separate side entrance and a mechanical room moved to a corner. Proximity to the **CALGARY**, schools, diverse retail and culinary delights are just some of the highlights. Call to book your showing now !!!!!!!



Built in 2024

## Essential Information

MLS® #	A2120442
Price	\$659,000
Bedrooms	3
Bathrooms	3.00
Full Baths	2
Half Baths	1
Square Footage	1,894
Acres	0.08
Year Built	2024
Type	Residential
Sub-Type	Semi Detached
Style	Side by Side, 2 Storey
Status	Active

## Community Information

Address	8 Waterford Manor
Subdivision	NONE
City	Chestermere
County	Chestermere
Province	Alberta
Postal Code	T1X 2T9

## Amenities

Parking Spaces	4
Parking	Double Garage Attached
# of Garages	2

## Interior

Interior Features	Breakfast Bar, Kitchen Island, No Animal Home, No Smoking Home, Pantry, Quartz Counters, Separate Entrance, Vinyl Windows, Soaking Tub
Appliances	Dishwasher, Electric Range, Garage Control(s), Microwave, Refrigerator
Heating	Forced Air, Natural Gas
Cooling	None
Fireplace	Yes
# of Fireplaces	1

Fireplaces	Electric
Has Basement	Yes
Basement	Full, Unfinished

### **Exterior**

Exterior Features	BBQ gas line, Lighting
Lot Description	Front Yard, Landscaped, Rectangular Lot
Roof	Asphalt Shingle
Construction	Concrete, Vinyl Siding, Wood Frame, Mixed
Foundation	Poured Concrete

### **Additional Information**

Date Listed	April 5th, 2024
Days on Market	363
Zoning	R2

### **Listing Details**

Listing Office	URBAN-REALTY.ca
----------------	-----------------

Data is supplied by Pillar 9â„¢ MLSÂ® System. Pillar 9â„¢ is the owner of the copyright in its MLSÂ® System. Data is deemed reliable but is not guaranteed accurate by Pillar 9â„¢. The trademarks MLSÂ®, Multiple Listing ServiceÂ® and the associated logos are owned by The Canadian Real Estate Association (CREA) and identify the quality of services provided by real estate professionals who are members of CREA. Used under license.